

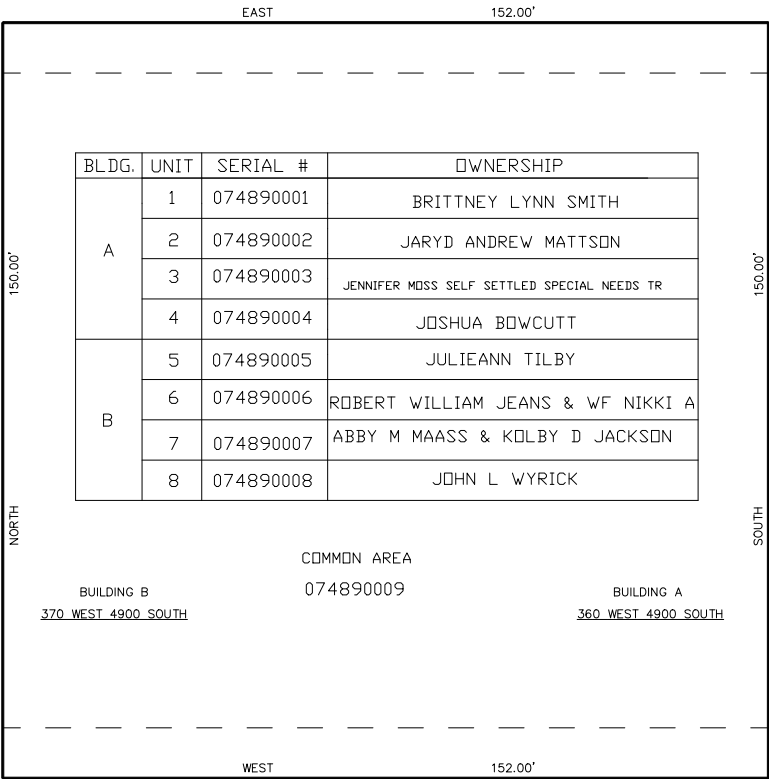
PART OF THE N.W. 1/4 OF THE N.W. 1/4 OF SEC. 17, T.5N., R.1W., S.L.B. & M.
TERRACE PINES CONDOMINIUMS PH. 1

489

TAXING UNIT: 24

IN WASHINGTON TERRACE CITY
SCALE 1" = 20'

SEE PAGE 67



SEE PAGE 480

SEE PAGE 67

4900 SOUTH ST.

SEE PAGE 67

*ADDRESS AFFIDAVIT E#3265621

FOR COMPLETE ENG DATA SEE
ORIGINAL DEDICATION PLAT IN
BOOK 42, PAGE 16-17 OF RECORDS.

* ESMT. NOT VACATED FROM TERRACE PINES SUB.
BOOK 40, PAGE 89 ON NORTH AND SOUTH 10 FT.

FOR TAX PURPOSES ONLY